



**Blue Hills  
Federation**

# St Marys CE Primary School Newsletter



19th June 2025

**Next Week:** Monday 23rd June Moving up morning, inc new Reception children

Monday 23rd June Arthog meeting @ 3.15

Tuesday 24th June School open day

Thursday 26th June Wigmore taster day YR 5

Thursday 26th June Leavers service @ Hereford Cathedral

Friday 27th June New reception children to visit Class all day.

Thursday 3rd July Year 6 Induction day @ Wigmore High School

Thursday 10th July Sports day and picnic with parents (letter to follow)

Friday 11th July End of term concert @Bedstone

Tuesday 15th July Yr 6 Bowling trip

Friday 18th July Leavers Service@ Church



## Open the Bible



The cheater who got cheated!



Please can we remind you that if your child arrives late to school, after 9.15 they will need a packed lunch as dinners will have been ordered.

Children must have suncream and a sunhat in school. They will have to sit in the shade or stay indoors if they do not.

Please ensure that all preschool, dinner, club and trip money is paid up to date for the end of the term, Thank you.

# Class News

## Preschool

What a busy week we have had. Firstly we were very excited to have the Jiggy Wrigglers come and work with the children to act out a story through music and dance. All Early Years children were actively engaged and thoroughly enjoyed collecting the eggs and baking with Tango the puppet.

Our caterpillars are now in the process of making their cocoon's, which we are all fascinated by . We've videoed this.

We have enjoyed lots of fun and learning outside, digging in the sand and watering our plants, also we have a new wooden play house that the children are currently setting up as a bakery.

Please remember to apply sun cream every morning.



## Class 1

It's Rail Safety week and in Class One, we watched a video clip about keeping safe on the railway <https://learnliveuk.com/ks1-primary-school-safety-talk/> When the Y1 and Y2 children and I went on our transport walk around the village last term, we did go to the train station to meet the train to Knighton. We talked together then about keeping safe near the railway lines and when on the platform. Everyone in Class one was lucky to receive their own copy of a Thomas Our Reception children loved the Jiggy Wrigglers session on Tuesday which Miss Evans and Mrs Ray organised. Thank you both so much.



# Class News

## Class 2 News

This week, we have written our own poems ready for the St Mary's poetry book that Catherine Cooper is very kindly compiling. Everyone has chosen their own theme for the poem which has resulted in some fabulous work. Their poetry will be sent off on Friday so you will have a chance to read your child's work by the end of term. Within RE, we have begun exploring the religion of Judaism by starting off exploring common features within many different celebrations. Despite the heat, everyone in Class 2 is putting in a huge amount of effort and deserves to feel very proud of themselves!

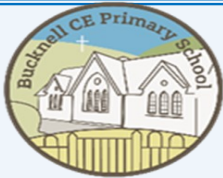


## Class 3

Class 3 have written the most amazing poems to be published in Catherine Cooper's new book later this term - we can't wait to share our publication with you! In Geography, we have been learning about the causes and impact of flooding. The Year 6s had a fantastic time at Crucial Crew this week, meeting representatives of a number of professions such as the emergency services and electricity board to find out how to stay safe. The class are also making great progress in their swimming lessons each week.







## Information for Parents School News



### Attendance

#### Attendance Figures for last week: 09.06.25-13.06.25 June

Teme (Class 1) 79.01%

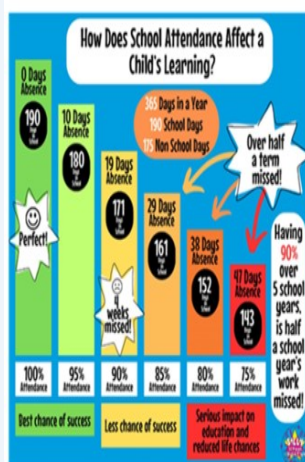
Hales (Class2) 96.36%

Redlake (Class 3) 98.24%

Overall 90.72% Target 96% or better.

Please remember our school day starts at 8.45am. You must let us know if your child is not going to be in school on a day by 8.45 am.

#### Attendance Matters



Please see the local and national school attendance expectations below:



Thank you to everyone who has signed up to Easy Fundraising, if you haven't signed up yet, please take a look, it doesn't cost you anything

Your online shopping won't cost you any extra and we'll be really grateful for your donations.

Please sign up here:  
[https://www.easyfundraising.org.uk/causes/st-marys-ce-primary-school-bucknell?utm\\_medium=Email-share&utm\\_source=Newsletter](https://www.easyfundraising.org.uk/causes/st-marys-ce-primary-school-bucknell?utm_medium=Email-share&utm_source=Newsletter)



## Parent Information



### Shropshire Parenting Help and Support Line

**01743 250950**

Mon - Thurs, 9.30am - 4.30pm  
Fri, 9.30am - 3.30pm

No judgment, just support.



Hello from the Family Information Service (FIS for short). Our job is to give you the info and resources you need to help your family life run a little smoother. We can help with:

- Childcare - finding it and advice on paying for it
- Local baby and toddler groups
- Events, clubs, activities, and fun things to do in the school holidays, for all ages
- Getting parenting and family support
- Finding health and wellbeing support

We cover everything and anything to do with family life, so if you have a question, chances are we'll be able to help, or if we can't, we'll point you in the direction of someone who can.



Follow us on social media for all the latest news and info.

[www.shropshire.gov.uk/fis](http://www.shropshire.gov.uk/fis)

### Understanding your child From toddler to teen

- Would you like to know more about your child's development?
- Do you need help and support to understand your child's behaviour?
- Would you like a chance to meet with other parents and carers with children of a similar age?

Join us for one of our free virtual or face-to-face groups, our next groups start:

Understanding Your Child Group 29<sup>th</sup> April 2025 from 9.15am to 11.15am at Crowsmoor Primary School, Shrewsbury  
Understanding Your Child Group 30<sup>th</sup> April 2025 from 9.00am to 11.00am at Clea Hill Community Primary School  
Understanding Your Child SEND Group 30<sup>th</sup> April 2025 from 12.30pm to 2.30pm at Shrewsbury TBA  
Understanding Your Child Group 30<sup>th</sup> April 2025 from 12.45pm to 2.45pm at Belvidere Primary School, Shrewsbury  
Understanding Your Child Group 1<sup>st</sup> May 2025 from 09.30am to 11.30am at Highley Community Primary School  
Understanding Your Child Group 1<sup>st</sup> May 2025 from 1.00pm to 3.00pm at St Lucia CofE Primary School, Upton Magna  
Understanding Your Child SEND Group 2<sup>nd</sup> May 2025 from 09.30am to 11.30am Virtually via MS Teams  
Understanding Your Child Group 2<sup>nd</sup> May 2025 from 1.15pm to 3.15pm at Christ Church CofE Primary School, Cressage

All our groups run for 10 weeks from the start date excluding the School Holidays.

SEND groups are for parents/carers of Children who might have special educational needs and disabilities, no formal diagnosis is needed to attend the groups.

To book a place email [Parenting.team@shropshire.gov.uk](mailto:Parenting.team@shropshire.gov.uk) or call 01743 250950

Find more free online courses at: [inourplace.co.uk/shropshire](http://inourplace.co.uk/shropshire)



## Family Drop-ins

### Free info, advice & support

You can get free information, advice and support on all aspects of family life, at our Family Drop-Ins. Come along for a coffee and a chat, and see how we can help you with:

- Family life
- Parenting support (including child development, behaviour, sleep and relationships)
- Domestic abuse support
- Money worries
- Housing support
- Special Educational Needs and/or Disabilities (SEND)

and much more



Find your local drop-in here



### Does your child struggle with their Sleep?

#### Free Sleep Tight Groups

Join us on one of our virtual or face-to-face groups which run for 5 weeks and:

- Find out why sleep is important for our health and emotional wellbeing
- Get support to help improve sleep and bedtime routines
- Meet other parents/carers to share and discuss experiences

Our next groups start:

Sleep Tight SEND Monday 9<sup>th</sup> June 2025 from 12.45pm to 2.45pm  
Virtually via MS Teams

or

Sleep Tight Monday 16<sup>th</sup> June 2025 from 9.15am to 11.15am  
Virtually via MS Teams

SEND groups are for parents/carers of children who might have special educational needs and disabilities, no formal diagnosis is needed to attend the groups.

To book a place email [Parenting.team@shropshire.gov.uk](mailto:Parenting.team@shropshire.gov.uk) or call 01743 250950

Find out more here



#### chat to us

Connect to a support worker with our **Live Chat** service.



#### forum

Speak to other women in our **supportive community** of survivors.



#### email

Send an email to one of our **support workers**. We will reply within 5 working days.



#### survivor's handbook

Get help on **housing, safety planning**, dealing with police and more.

For more information visit [www.womensaid.org.uk](http://www.womensaid.org.uk)  
Women's Aid is a registered charity in England No. 1054154

**women's aid**  
until women & children are safe