



**Blue Hills  
Federation**

# ST Marys CE Primary School

## Newsletter



12th June 2025

**Next Week: Monday 16th June Crucial Crew Yr 6**

**Tuesday 17th June Class & Leavers photos**

**Tuesday 17th June Preschool open afternoon 1.30-3.00pm**

**Monday 23rd June Moving up morning, inc new Reception children**

**Monday 23rd June Arthog meeting @ 3.15**

**Tuesday 24th June School open day**

**Thursday 26th June Wigmore taster day YR 5**

**Thursday 26th June Leavers service @ Hereford Cathedral**

**Friday 27th June New reception children to visit Reception class all day.**

**Thursday 3rd July Year 6 Induction day @ Wigmore High School**

**Thursday 10th July Sports day**

**Friday 11th July End of term concert @Bedstone**

**Tuesday 15th July Yr 6 Bowling trip**

**Friday 18th July Leavers Service@ Church**



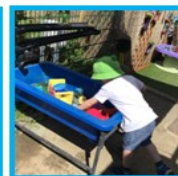
## Open the Bible



**The cheater who got cheated!**



**Blue Hills  
Federation**



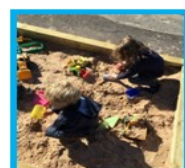
Jiggy Wrigglers will  
be here from 2pm

**Bucknell Preschool  
open afternoon  
Wednesday 17th June  
1.30pm-3.00pm**

Refreshments  
available



- Come along and see our Wonderful Preschool
- Meet our friendly staff and see what wonderful facilities we can offer your children from the age of 2.



- We have funded and private places available.
- Part of St Mary's Primary school ensuring a smooth transition to school.



Website: <https://bhf.shropshire.sch.uk/st-marys-primary/>



Tel: 01547 530264

Email: [adminbucknell@bhf.shropshire.sch.uk](mailto:adminbucknell@bhf.shropshire.sch.uk)



# Class News

## Preschool

We have had a great week learning about caterpillars, talking about the lifecycle and welcoming our little visitors. We have 5 baby caterpillars which we are looking at every day for the changes.

Tizzy Tiger joined us for snack time, he came to show the children how to work through the steps in order to make their toast, using the vocabulary first, next and last. They thoroughly enjoyed this activity and had the choice of strawberry jam or marmalade.

We also enjoyed making fruit kebabs with Reception.



## Class One

This week, we've all been really interested in how much are caterpillars are growing. They're getting bigger and bigger! Mrs McLean brought in lots of fruit on Tuesday for our Reception children to cut up. They enjoyed making and eating fruit kebabs like the very hungry caterpillar. The Y1s and Y2s have been learning how to tell the time on an analogue clock, please help them by showing them clocks, analogue or digital at home and talking about the time.



# Class News

## Class 2 News

This week, all of Class 3 and a large amount of Class 2 begun their swimming sessions. It was a pleasure to see their effort and progress in the pool and their manners on the bus journey were exemplary. Key Stage 2 have also had a Zoom call with Catherine Cooper this week. This time we are working on Poetry together. Watch this space for some wonderful poetry that the children have written... As always, thank you so much to Catherine for all of the time, opportunities and experiences that you offer to our school. We are very appreciative and love working with you.



## Class 3

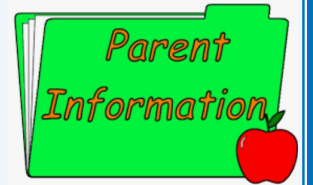
**Congratulations** to the year 6s who completed their goblin car project at Curborough race track last week. Oliver and Fin raced the 'Bucknell Baguette' creation against 24 other schools' cars and in the time trial achieved a phenomenal 5th place! They returned with a magnificent trophy in recognition of their efforts. Thank you to **Steve** and **Rob**, our goblin car ambassadors and experts, without whom this opportunity would never have been possible. Thank you also to our school governor, **Mrs White**, and **Miss Hughes** for accompanying the children on this trip, particularly given the 6.15am departure time!







## Information for Parents School News



### Attendance

#### Attendance Figures for last week: 02.06.25-06.06.25 June

Teme (Class 1) 90%

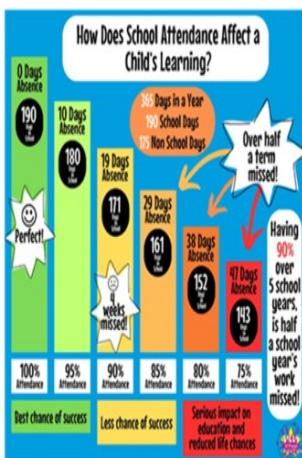
Hales (Class 2) 92.73%

Redlake (Class 3) 97.65%

Overall **93.48%** Target 96% or better.

Please remember our school day starts at 8.45am. You must let us know if your child is not going to be in school on a day by 8.45 am.

#### Attendance Matters



Please see the local and national school attendance expectations below:



Thank you to everyone that has signed up to Easy Fundraising, if you haven't signed up yet, please take a look, it doesn't cost you anything

Your online shopping won't cost you any extra and we'll be really grateful for your donations.

Please sign up here:

[https://](https://www.easyfundraising.org.uk/causes/st-marys-ce-primary-school-bucknell?utm_medium=Email-share&utm_source=Newsletter)

[www.easyfundraising.org.uk/causes/st-marys-ce-primary-school-bucknell?](https://www.easyfundraising.org.uk/causes/st-marys-ce-primary-school-bucknell?utm_medium=Email-share&utm_source=Newsletter)

[&utm\\_medium=Email-share&utm\\_source=Newsletter](https://www.easyfundraising.org.uk/causes/st-marys-ce-primary-school-bucknell?utm_medium=Email-share&utm_source=Newsletter)



Check out this website about safe parking outside schools for more information. <https://www.police.uk/advice/advice-and-information/rs/road-safety/parking-outside-schools/>

Please can we remind you that if your child arrives late to school, after 9.15 they will need a packed lunch as dinners will have been ordered.



## Parent Information



### Shropshire Parenting Help and Support Line

**01743 250950**

Mon - Thurs, 9.30am - 4.30pm  
Fri, 9.30am - 3.30pm

No judgment, just support.



## Family Drop-ins

### Free info, advice & support

You can get free information, advice and support on all aspects of family life, at our Family Drop-Ins. Come along for a coffee and a chat, and see how we can help you with:

- Family life
- Parenting support (including child development, behaviour, sleep and relationships)
- Domestic abuse support
- Money worries
- Housing support
- Special Educational Needs and/or Disabilities (SEND)

and much more



Find your local drop-in here



Hello from the Family Information Service (FIS for short). Our job is to give you the info and resources you need to help your family life run a little smoother. We can help with:

- Childcare - finding it and advice on paying for it
- Local baby and toddler groups
- Events, clubs, activities, and fun things to do in the school holidays, for all ages
- Getting parenting and family support
- Finding health and wellbeing support

We cover everything and anything to do with family life, so if you have a question, chances are we'll be able to help, or if we can't, we'll point you in the direction of someone who can.



Follow us on social media for all the latest news and info.

[www.shropshire.gov.uk/fis](http://www.shropshire.gov.uk/fis)

### Understanding your child

#### From toddler to teen

- Would you like to know more about your child's development?
- Do you need help and support to understand your child's behaviour?
- Would you like a chance to meet with other parents and carers with children of a similar age?

Join us for one of our free virtual or face-to-face groups, our next groups start:

Understanding Your Child Group 29<sup>th</sup> April 2025 from 9.15am to 11.15am at Crowsmoor Primary School, Shrewsbury  
 Understanding Your Child Group 30<sup>th</sup> April 2025 from 9.00am to 11.00am at Cleve Hill Community Primary School  
 Understanding Your Child SEND Group 30<sup>th</sup> April 2025 from 12.30pm to 2.30pm at Shrewsbury TBA  
 Understanding Your Child Group 30<sup>th</sup> April 2025 from 12.45pm to 2.45pm at Belvidere Primary School, Shrewsbury  
 Understanding Your Child Group 1<sup>st</sup> May 2025 from 09.30am to 11.30am at Highley Community Primary School  
 Understanding Your Child Group 1<sup>st</sup> May 2025 from 1.00pm to 3.00pm at St Lucia CofE Primary School, Upton Magna  
 Understanding Your Child SEND Group 2<sup>nd</sup> May 2025 from 09.30am to 11.30am Virtually via MS Teams  
 Understanding Your Child Group 2<sup>nd</sup> May 2025 from 1.15pm to 3.15pm at Christ Church CofE Primary School, Cressage

All our groups run for 10 weeks from the start date excluding the School Holidays.

SEND groups are for parents/carers of Children who might have special educational needs and disabilities, no formal diagnosis is needed to attend the groups.

To book a place email [Parenting.team@shropshire.gov.uk](mailto:Parenting.team@shropshire.gov.uk) or call 01743 250950

Find more free online courses at: [inourplace.co.uk/shropshire](http://inourplace.co.uk/shropshire)



### Does your child struggle with their Sleep?

#### Free Sleep Tight Groups

Join us on one of our virtual or face-to-face groups which run for 5 weeks and:

- Find out why sleep is important for our health and emotional wellbeing
- Get support to help improve sleep and bedtime routines
- Meet other parents/carers to share and discuss experiences

Our next groups start:

**Sleep Tight SEND Monday 9<sup>th</sup> June 2025 from 12.45pm to 2.45pm**  
Virtually via MS Teams

or

**Sleep Tight Monday 16<sup>th</sup> June 2025 from 9.15am to 11.15am**  
Virtually via MS Teams

SEND groups are for parents/carers of children who might have special educational needs and disabilities, no formal diagnosis is needed to attend the groups.

To book a place email [Parenting.team@shropshire.gov.uk](mailto:Parenting.team@shropshire.gov.uk) or call 01743 250950

Find out more here



#### chat to us

Connect to a support worker with our **Live Chat** service.



#### forum

Speak to other women in our **supportive community** of survivors.



#### email

Send an email to one of our **support workers**. We will reply within 5 working days.



#### survivor's handbook

Get help on **housing, safety planning**, dealing with police and more.

For more information visit [www.womensaid.org.uk](http://www.womensaid.org.uk)  
Women's Aid is a registered charity in England No. 1054154

**women's aid**  
until women & children are safe





## Parent Information

**Skips Safety Net**

Keeping children safe online

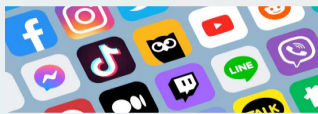
### A Parent's Guide to Safety and Privacy Settings



**When you give a child access to the internet, you give them access to the adult world.**

The Internet treats everyone as adults and there are many things, they are not yet ready to know, which is why it is vital that some form of safety settings are in place. Doing something is better than doing nothing.

**What happens online has an effect to what happens offline and what happens offline has an effect to what happens online.**



**Online safety is when young people know who they can tell if they feel upset by something that has happened online.**

**Parents** please contact your school to enquire attending their next e-safety workshop or have any concerns.

Working with Home Office 'PREVENT', The Police and Crime Commissioner and Children's Safeguarding Partnerships to help keep children safe online.  
Skips Educational Email: info@skipssafetynet.com Tel: +44 121 227 1941

Developed in partnership with



**Skips** [www.skipssafetynet.org](http://www.skipssafetynet.org)

### Health Kids! School Nursing

The School Nursing Team provide health and wellbeing information, advice, support and guidance to children and young people, teachers, families and carers across Shropshire. We are part of the 0-19 Public Health Nursing Service which contains Specialist Nurses (School Nurses and Health Visitors), Registered Nurses, Healthy Child Practitioners and Support Workers.

Every Local Authority funded school in Shropshire has a named School Nurse. We offer lots of different services, workshops and events enabling schools to contribute to PSHE outcomes, as well as targeted one to one support for children and their families.

Your child might come across a School Nurse in school in an education session or health related workshop, but we will not see your child alone without your consent. Sometimes, children ask us for individual advice and we will always feed this back confidentially to parents and carers.



### Oaker Wood NATURALLY ADVENTUROUS

#### AUTUMN OUTDOOR ADVENTURE FOR SCHOOLS

**Autumn Adventures Await at Oaker Wood**  
- Now with Special Discounts! -

School Children can discover their adventurous side during an activity day (10am - 2pm) at Oaker Wood this Autumn!

- Low Ropes Assault Course & Woodland Krypton ONLY £20pp\* plus vat
- Low Ropes Assault Course & High Ropes Adrenaline ONLY £25pp\* plus vat

\*APPLIES TO SEPT, OCT & NOV 2025. MUST BE BOOKED BY 1<sup>ST</sup> JULY 2025



Outdoor trips build confidence, spark curiosity, and create memories that last a lifetime. We encourage children to climb, explore, and discover the world beyond the screen, because the best learning starts outside!

Email [info@oakerwoodleisure.co.uk](mailto:info@oakerwoodleisure.co.uk) to get booked in.

Oaker Wood Leisure | Herefordshire  
[www.oakerwoodleisure.co.uk](http://www.oakerwoodleisure.co.uk)



### You have what it takes for a rewarding career in fostering

- Your everyday experiences and skills are transferable into a foster carer role, from providing emotional support to teaching life skills.
- We offer many different types of fostering roles, including short-term, parent & child, therapeutic and long-term.
- Our fostering roles are suitable for individuals, couples, or families from all walks of life. All children are different, so our foster carers are too.
- Be part of our professional team and receive our ongoing comprehensive training.
- Receive generous fostering allowances, benefits and tax relief.

**As a foster carer, you could provide a safe and stable home environment for a vulnerable child whilst enjoying a flexible and rewarding career that's literally life changing.**



Tel: 01952 916 002 Web: [www.nexusfostering.co.uk/Telford](http://www.nexusfostering.co.uk/Telford)

## SOAP BOX DERBY

HANWAY COMMON  
Immediately above the village of Richards Castle

### FANTASTIC FAMILY DAY OUT...

- Soap Box racing against the clock
- Bouncy Castle & Slide
- The Welsh Axemen
- Rally Car Display
- Lawn Mower Racing
- FOOD & DRINK
- Pig Roast | Jacket Potatoes
- Local Tuddes Sausages
- Pizza Girls | Ice Cream | Bar
- Le Flip Crêperie | Teas & Cakes



**Sunday 29<sup>th</sup> June 2025 - 10am to 4pm**



VOTE ON THE DAY!  
BEST Down on the Farm Soap Box

© Dave Dave Photography

[richardscastlesoapbox.co.uk](http://richardscastlesoapbox.co.uk)



**RAISING FUNDS FOR LOCAL CHARITIES:**  
ELY MEMORIAL FUND  
ORLETON PRE-SCHOOL  
WE ARE FARMING MINDS

Spectators £7.50, children under 12 free  
£20 for a family car (2 adults + 2 under 18yrs)

The link below is to the Shropshire Family Services newsletter, where you can find lots of information on what's going on and where to go for support and

<https://links-2.govdelivery.com/CL0/https:%2F%2Fcontent.govdelivery.com%2Faccounts%2FUKSHROPSHIRE%2Fbulletins%2F3bbbed53%3Frefqfrom=share/1/010101928fff93a2-66d9edcf-85a0-4979-bceb-9dabe822a25e-000000/>